

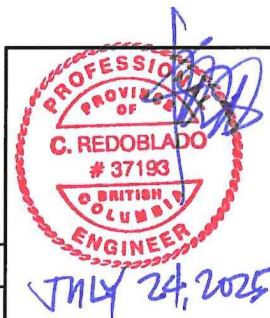
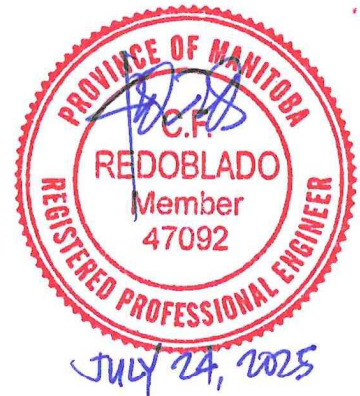
**STRUCTURAL NOTES:**

**GENERAL**

1. THE GUARDRAIL POST CONNECTION AS DESCRIBED IN THESE DRAWINGS HAVE BEEN DESIGNED IN SUBSTANTIAL COMPLIANCE WITH THE NBC 2020, OBC 2024, ABC 2023 AND BCBC 2024.
2. EXCEPT FOR THE GUARDRAIL POST CONNECTION, JCJ ACCEPTS NO RESPONSIBILITY FOR THE STRUCTURAL ADEQUACY OF THOSE AREAS OF THE STRUCTURE THAT ARE BEYOND THE SCOPE OF POST CONNECTION WORK. THE EXISTING STRUCTURE REMAINS THE RESPONSIBILITY OF THE ORIGINAL DESIGNER.
3. RAILING DESIGN IS EXCLUDED IN THE SCOPE OF WORK. FOR RAILING DESIGN AND LOAD TEST RESULTS, SEE DESIGN DRAWINGS PREPARED BY REGAL IDEAS INC.
4. PERFORM ALL WORK IN ACCORDANCE WITH REQUIREMENTS OF THE AUTHORITY HAVING JURISDICTION.
5. IF ANY HIDDEN DAMAGE IS UNCOVERED DURING THE COURSE OF RAILING CONSTRUCTION, REPORT IT PROMPTLY TO THE ENGINEER FOR EVALUATION.
6. ALL DIMENSIONS TO BE FIELD VERIFIED BY CONTRACTOR PRIOR TO ORDERING MATERIALS.

**GUARDRAIL NOTES**

1. THE GUARDRAIL POST CONNECTION HAS BEEN DESIGNED TO MEET THE REQUIREMENTS OF THE NBCC 2020, OBC 2024, ABC 2023 AND BCBC 2024.
2. DESIGN LOADS:  
WIND:  $q_{50} = 0.70 \text{ kPa}$   
  
GUARDRAIL LOADS:  
CONCENTRATED LOAD = 225 LB (1 kN) HORIZONTAL LOAD APPLIED INWARD OR OUTWARD AT ANY POINT  
UNIFORM LOAD = 34 LB/FT (1.5 kN/m) HORIZONTAL LOAD APPLIED INWARD OR OUTWARD  
TOP OF GUARD = 103 LB/FR (1.5 kN/m) EVENLY DISTRIBUTED LOAD APPLIED AT THE TOP OF THE GUARD
3. ALL STRUCTURAL ITEMS MUST BE REVIEWED BY THE STRUCTURAL ENGINEER OR BY ANOTHER SUITABLY QUALIFIED PERSON RESPONSIBLE TO THE STRUCTURAL ENGINEER.
4. MATERIAL & HARDWARE:  
WOOD BLOCKING: SPF, WESTERN RED CEDAR, D.FIR, OR HEMLOCK  
SCREW: REGAL CORROSION RESISTANT FASTENER AS NOTED
5. VERIFY ALL DIMENSIONS PRIOR TO CONSTRUCTION, REPORT DISCREPANCIES TO THE ENGINEER.



**JU DESIGN ENGINEERING LTD.**  
UNIT C410 - 20178 96 AVENUE, LANGLEY BC CANADA V1M 0B2  
T. 604-533-8423 W. www.jdesigneng.com

PROJECT: RAIL POST CONNECTION

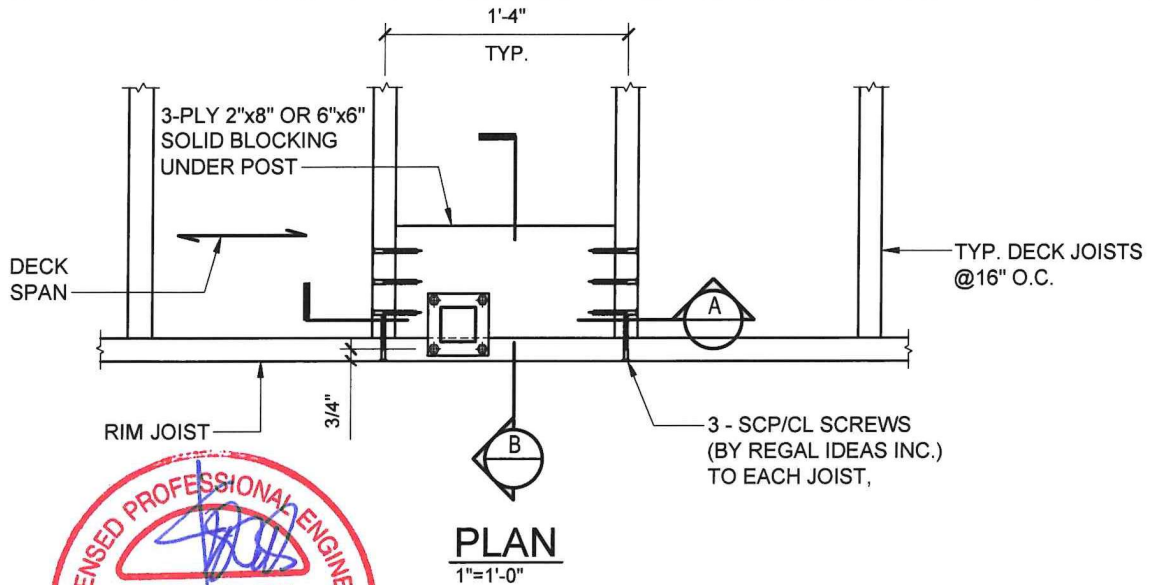
CLIENT: REGAL IDEAS INC.

SHEET CONTENT: STRUCTURAL NOTES

No.	DESCRIPTION	DATE	BY	CHK
2	STANDARD DETAIL	APR. 25, 2025	RS	CFR
1	STANDARD DETAIL	OCT. 13, 2020	HY	CFR

THIS DRAWING IS FOR READ ONLY PURPOSES. NO DUPLICATION OR REPRODUCTION OF ANY KIND IS PERMITTED WITHOUT THE WRITTEN CONSENT OF JCJ DESIGN ENGINEERING LTD.

DATE: 10/13/2020	SCALE: AS SHOWN	PROJECT NO.: R10-1	SHEET NO.: R10-1-001
------------------	-----------------	--------------------	----------------------



2 1/4", 2 3/4", 4"  
SQUARE POSTS  
@ 8'-0" MAX. (BY  
REGAL IDEAS INC.)

BASE PLATE (BY  
REGAL IDEAS INC.)  
T.O. DECK

TYP. 36" TO 60"  
TO TOP OF TOP RAIL

4 - MPSS/URSL  
STRUCTURAL SCREWS  
(BY REGAL IDEAS INC.)  
W/ BLOCKING BELOW  
DECK

2 1/4", 2 3/4", 4"  
SQUARE POSTS  
@ 8'-0" MAX. (BY  
REGAL IDEAS INC.)

EDGE OF  
DECK

4 - MPSS/URSL  
STRUCTURAL SCREWS  
(BY REGAL IDEAS INC.)  
W/ BLOCKING BELOW  
DECK

3 - SCP/CL SCREWS  
(BY REGAL IDEAS INC.)  
TO EACH BLOCKING,  
TYP. AT BOTH SIDES

MIN. 2x8"@16"  
DECK JOIST

SCP/CL SCREWS  
(BY REGAL IDEAS INC.)  
TO EACH BLOCKING  
@ 3" O.C. MAX.

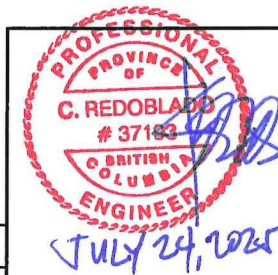
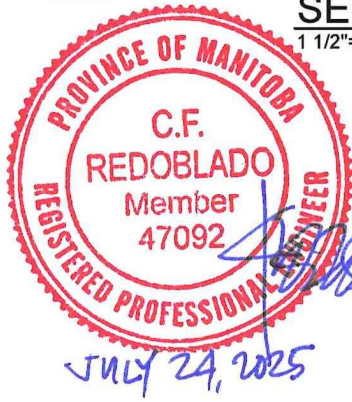
3-PLY 2"x8" OR 6"x6"  
SOLID BLOCKING  
UNDER POST

**SECTION A**  
1 1/2"=1'-0"

**SECTION B**  
1 1/2"=1'-0"



**POST TOP MOUNT CONNECTION**  
(DECK JOISTS PERPENDICULAR TO RIM JOIST)



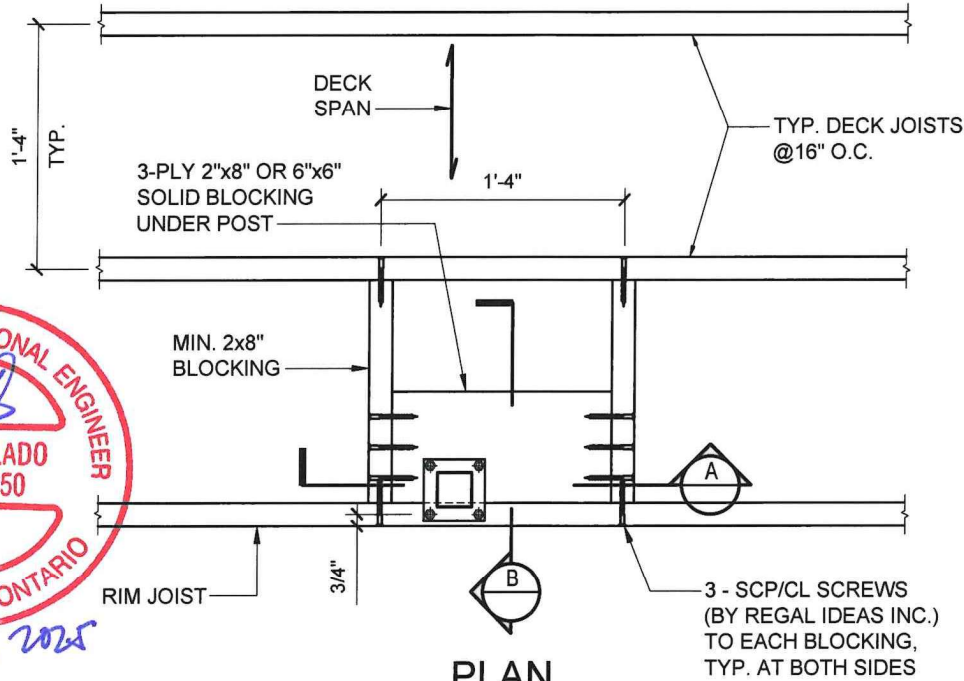
<b>JC DESIGN ENGINEERING LTD.</b> UNIT C410 - 20178 96 AVENUE, LANGLEY BC CANADA V1M 0B2 T: 604-533-8423 W: www.jcdesigneng.com			
PROJECT:	RAIL POST CONNECTION		
CLIENT:	REGAL IDEAS INC.		
SHEET CONTENT:	POST TOP MOUNT CONN.		
DATE:	SCALE:	PROJECT NO.:	SHEET NO.:
10/27/2020	AS SHOWN	R10-1	R10-1-004

No.	DESCRIPTION	DATE	BY	CHK
2	STANDARD DETAIL	APR. 25, 2025	RS	CFR
1	STANDARD DETAIL	OCT. 27, 2020	HY	CFR

THIS DRAWING IS FOR READ ONLY PURPOSES.  
NO DUPLICATION OR REPRODUCTION OF ANY  
KIND IS PERMITTED WITHOUT THE WRITTEN  
CONSENT OF J.C.J DESIGN ENGINEERING LTD.



JULY 24, 2025



**PLAN**  
1"=1'-0"

2 1/4", 2 3/4", 4" SQUARE POSTS @ 8'-0" MAX. (BY REGAL IDEAS INC.)

BASE PLATE (BY REGAL IDEAS INC.)

T.O. DECK

TYP. 36" TO 60" TO TOP OF TOP RAIL

4 - MPSS/URSL STRUCTURAL SCREWS (BY REGAL IDEAS INC.) W/ BLOCKING BELOW DECK

2 1/4", 2 3/4", 4" SQUARE POSTS @ 8'-0" MAX. (BY REGAL IDEAS INC.)

4 - MPSS/URSL STRUCTURAL SCREWS (BY REGAL IDEAS INC.) W/ BLOCKING BELOW DECK

3/4"

EDGE OF DECK

3 - SCP/CL SCREWS (BY REGAL IDEAS INC.) TO EACH BLOCKING, TYP. AT BOTH SIDES

MIN. 2x8" BLOCKING

SCP/CL SCREWS (BY REGAL IDEAS INC.) TO EACH BLOCKING @ 3" O.C. MAX.

3-PLY 2"x8" OR 6"x6" SOLID BLOCKING UNDER POST

**SECTION A**  
1 1/2"=1'-0"

**SECTION B**  
1 1/2"=1'-0"

**POST TOP MOUNT CONNECTION**  
(DECK JOISTS PARALLEL TO RIM JOIST)



JULY 24, 2025



JULY 24, 2025



JULY 24, 2025

**JCJ DESIGN ENGINEERING LTD.**  
UNIT C410 - 20178 96 AVENUE, LANGLEY BC CANADA V1M 0B2  
T: 604-533-8423 W: www.jcjdiseing.com

PROJECT: RAIL POST CONNECTION

CLIENT: REGAL IDEAS INC.

SHEET CONTENT: POST TOP MOUNT CONN.

No.	DESCRIPTION	DATE	BY	CHK
2	STANDARD DETAIL	APR. 25, 2025	RS	CFR
1	STANDARD DETAIL	OCT. 27, 2020	HY	CFR

THIS DRAWING IS FOR READ ONLY PURPOSES. NO DUPLICATION OR REPRODUCTION OF ANY KIND IS PERMITTED WITHOUT THE WRITTEN CONSENT OF JCJ DESIGN ENGINEERING LTD.

DATE: 10/27/2020 SCALE: AS SHOWN PROJECT NO.: R10-1 SHEET NO.: R10-1-005