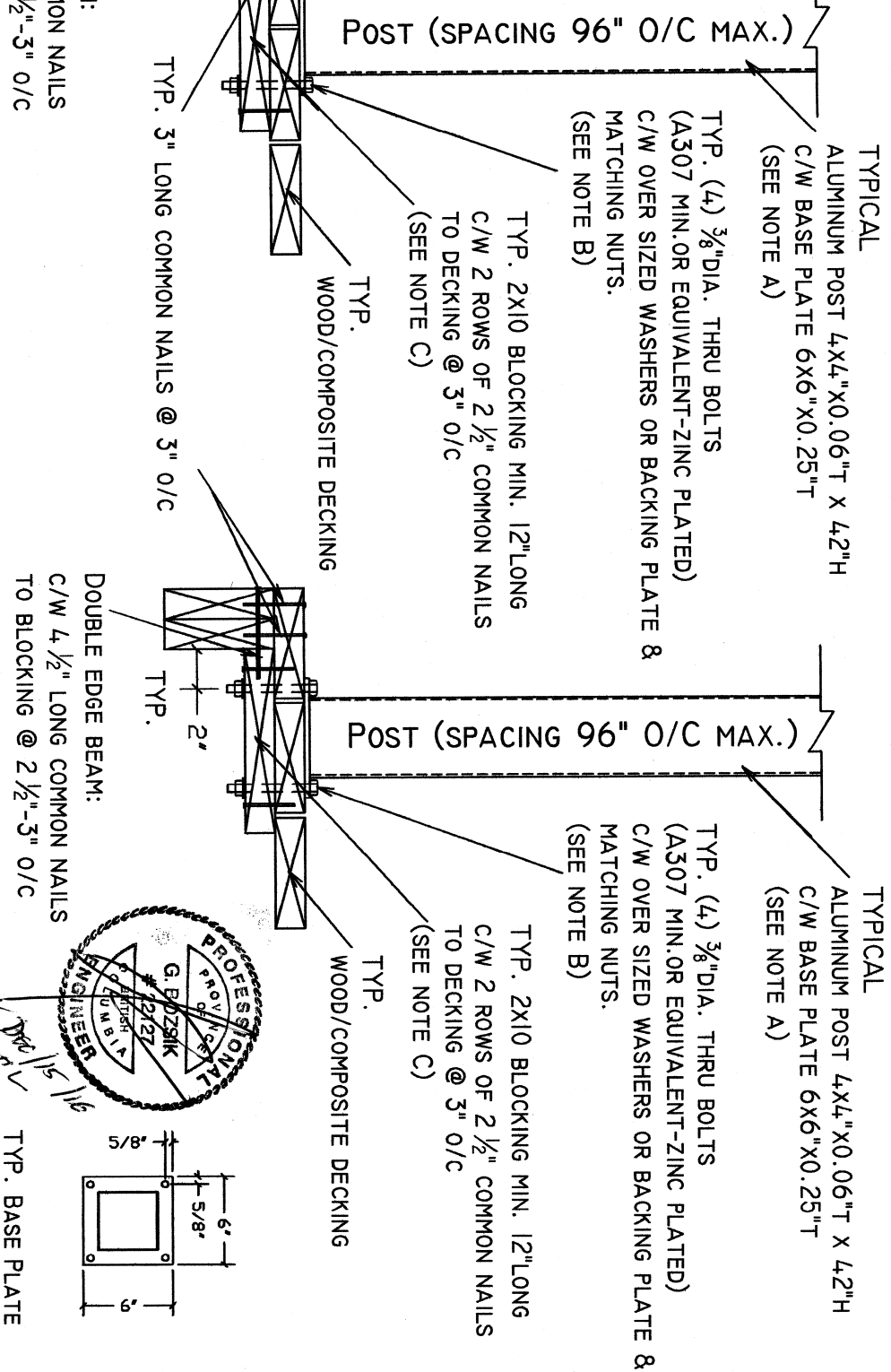


Valid until 15/12/16
 Dec 15/16

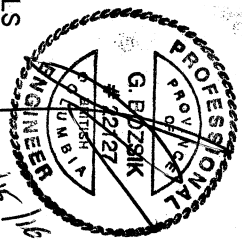
TYP. SECTION THROUGH WOOD OR COMPOSITE WOOD DECK



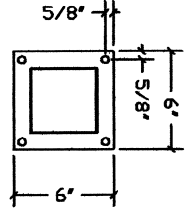
SINGLE EDGE BEAM:
 C/W 3" LONG COMMON NAILS
 TO BLOCKING @ 2 1/2"-3" O/C

DOUBLE EDGE BEAM:
 C/W 4 1/2" LONG COMMON NAILS
 TO BLOCKING @ 2 1/2"-3" O/C

TYP. BASE PLATE
 6X6" X 1/2" T
 C/W (4) 7/8" DIA. HOLES



Valid until 15/12/16
 Dec 15/16

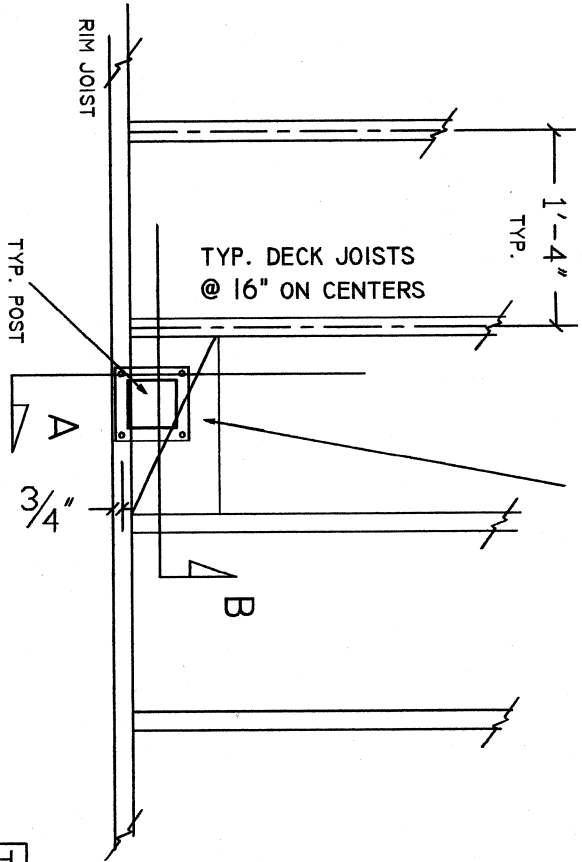


- NOTE:**
- A) PICKET RAIL POST TO POST SPACING = 8' ON CENTER MAX.
 - B) STRUCTURAL ADEQUACY AND DESIGN OF BASE STRUCTURE DECKING BY OTHERS.
 - C) WOOD MEMBERS TO BE PRESSURE TREATED NO. 1/2 OR BETTER

		CUSTOMER: Regal Ideas	
Burndy Engineering Associates Ltd.		SUBJECT: Picket Rail post Anchoring to Wood Deck Details	
DATE: 5/Dec/2016	DATE: 5/Dec/2016	DWG NO.: 3-2453	SCALE: N.T.S.

PICKET POST - TOP MOUNT TO DECK,
DECK JOISTS PERPENDICULAR TO BLOCKING ON "FLAT"

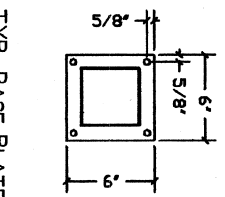
(5) WOOD BLOCKING 2X8 ON FLAT
FULL LENGTH BETWEEN JOISTS



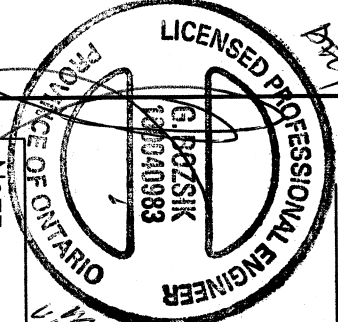
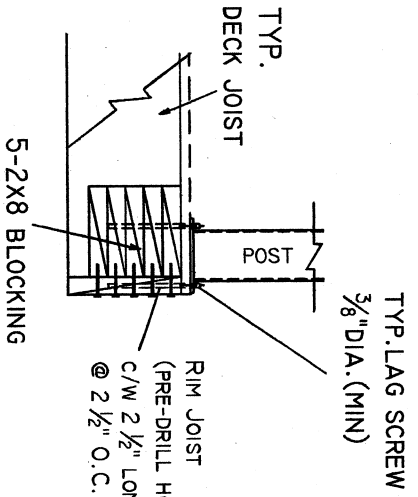
SECTION A

TYP. PICKET POST 4"x4"x0.06" T ALUM.
4.2" HIGH, MAX.
BASE PLATE 6X6"x0.25" T
POST SPACING = 96" MAX.

ANCHORAGE:
(4) 3/8" Ø LAG SCREWS PER POST
EMBEDMENT = 6.7" MIN.



TYP. BASE PLATE
6"x6" X 1/4" T
C/W (4) 1/2" DIA. HOLES



NOTE:

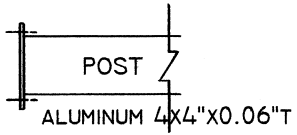
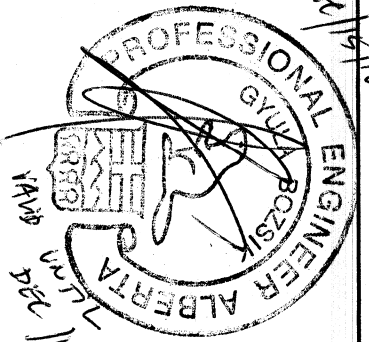
- PPST TO POST SPACING = 96" ON CENTER MAX.
- ALL WOOD MEMBERS TO BE D.FIR NO.2 OR BETTER.
- STRUCTURAL ADEQUACY AND DESIGN OF BASE STRUCTURE BY OTHERS.

VALID UNTIL
DEC 15/16
SECTION B

(5) 2X8 BLOCKING
C/W 2 1/2" LONG COMM. @ 2 1/2" O.C. MAX.



VALID UNTIL
DEC 15/16



BEA

Burnaby Engineering Associates Ltd.

CUSTOMER:	Regal Ideas
SUBJECT:	Picket Rail post (4x4") Anchoring to wood decking Floor Joists Perpendicular to Blocking
DATE:	7/NOV/2016
PROJ. NO.:	3-2455
SCALE:	N.T.S.